



Fuller Working Lives

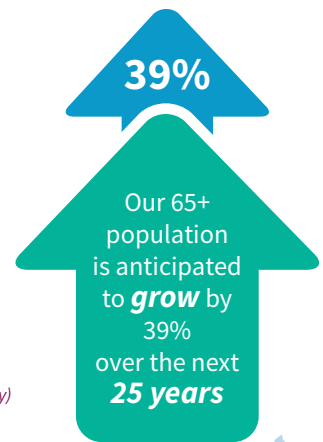
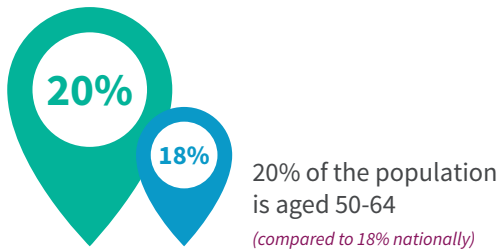
A North East View...

Written by Victoria Sutherland, North East LEP

Retaining, retraining and recruiting the 50+ workforce

The North East Local Enterprise Partnership (LEP) has been working with partners across the region to help employers understand the importance of the 50+ workforce.

Key issues in the North East:



From 2021, those aged 50-64 in the North East will **decline**

This will create a particular challenge for employers in education, health, public administration and manufacturing that heavily rely on this group

The working age (16-64 population) is forecast to **decline**

To manage this, the North East will need to get better at making use of its available labour force

The North East has one of the **lowest proportions of 50-64 year olds in work**



The North East strategic economic plan

AIM Deliver more and better jobs in the North East

WHY The North East must become much more effective at utilising the existing skills, capabilities and experience of the 50+ workforce and helping them develop the skills of the future

GOAL To increase the number of jobs in the region by 100,000 - 70% in managerial, professional and technical roles

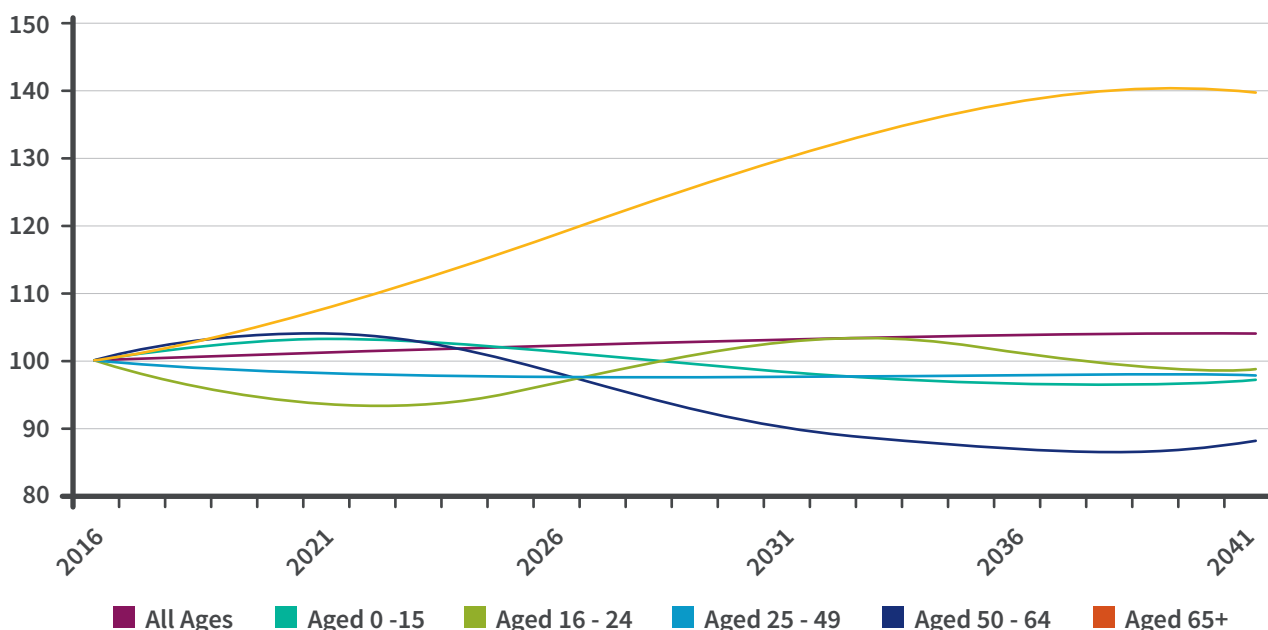
HOW Make sure employers are able to access the skilled workers they need to fill these roles will be crucial to achieving this goal

Fuller Working Lives

A North East View...

Index of change in population by age band (2016 = 100)

North East LEP area, 2016 to 2041



Source: Population projections (Nomis)

Labour market participation of 50-64 population

North East LEP area, 2017

Employed

> 265,300 individuals
> 67% of 50-64 year olds

Economically Inactive

> 118,600 individuals
> 29% of 50-64 year olds

Unemployment

> 12,200 individuals
> 4.4% of economically active 50-64 year olds



Source: Annual Population Survey (Nomis)



North East
Growth Hub

Call for Business Support:

0300 456 3565

www.northeastgrowthhub.co.uk